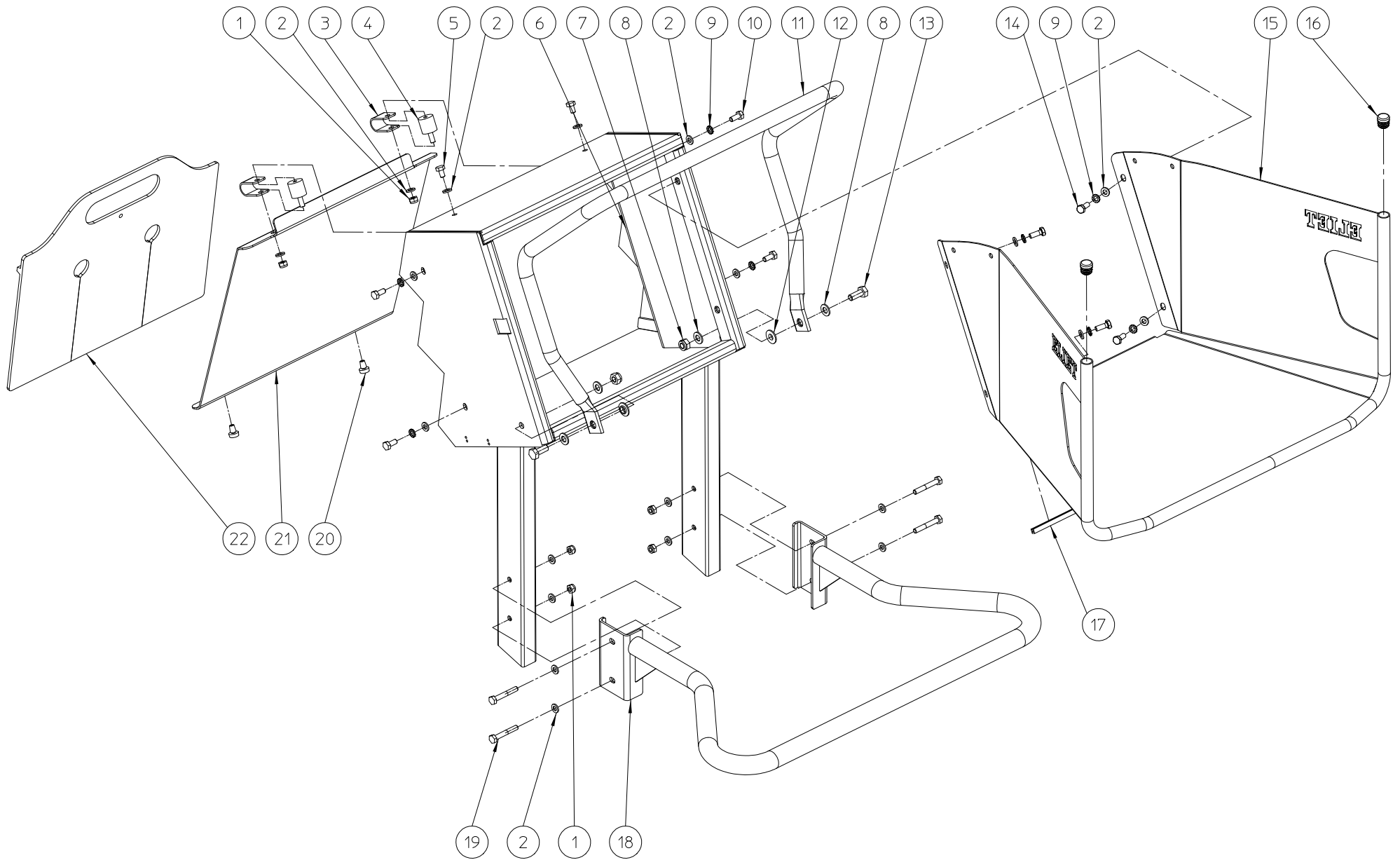


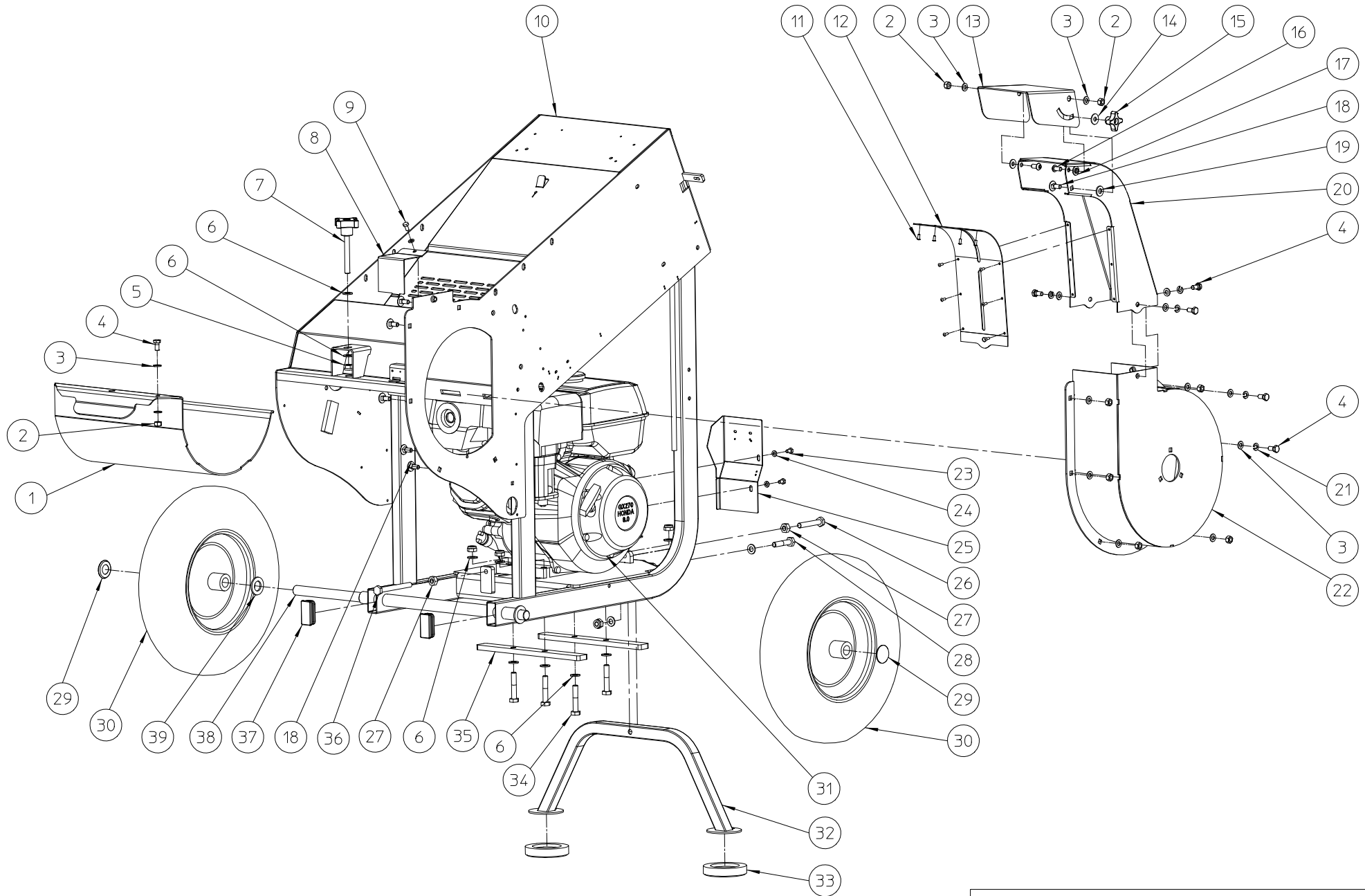
| | | | | |
|---------------------------|----------------|-----|---|------|
| ELIET MAJOR 4S -- GENERAL | | | | |
| NO | MMA 01 041 100 | REV | 4 | DATE |

| # | Order nr | article description | quantity |
|---|----------------|-----------------------|----------|
| 1 | MMA 01 041 110 | machine front side | 1 |
| 2 | MMA 01 041 120 | chassis | 1 |
| 3 | MMA 01 041 130 | rotor | 1 |
| 4 | MMA 01 041 140 | transmission | 1 |
| 5 | MMA 01 041 150 | electrical system | 1 |
| 6 | MMA 01 041 160 | rental kit | 1 |
| 7 | MMA 01 041 170 | metal tank rental kit | 1 |
| 8 | MMA 01 041 210 | stickers eliet | 1 |



| | | | | |
|--------------------------------------|----------------|-----|---|-----------------|
| ELIET MAJOR 4S -- MACHINE FRONT SIDE | | | | |
| NO | MMA 01 041 110 | REV | 3 | DATE 2017/01/10 |

| # | Order nr | article description | quantity |
|----|----------------|---|----------|
| 1 | BS 502 000 600 | self locking nut m6 din 985 | 6 |
| 2 | BS 531 000 600 | washer m6 din 125 | 20 |
| 3 | BR 910 000 020 | retainer ertalon 80x20x2 | 2 |
| 4 | BR 600 220 200 | antivibration blocks 20x20b m6x15 | 2 |
| 5 | BS 512 000 610 | bolt m6x10 din 933 | 2 |
| 6 | MPA 01 041 280 | safety plate | 2 |
| 7 | BS 502 000 800 | self locking nut m8 din 985 | 2 |
| 8 | BS 531 000 800 | washer m8 din 125 | 4 |
| 9 | BS 534 000 600 | lock washer m6 din 6798a | 8 |
| 10 | BS 512 000 614 | bolt m6x14 din 933 | 4 |
| 11 | MPA 01 040 040 | safety handle | 1 |
| 12 | BR 112 080 300 | nylon bushing with collar (8.2/10.9/18x3.5/1.5) | 2 |
| 13 | BS 512 000 820 | bolt m8x20 din 933 | 2 |
| 14 | BS 512 000 616 | bolt m6x16 din 933 | 4 |
| 15 | MPA 01 041 680 | hopper major 4s v2016 | 1 |
| 16 | BR 020 501 160 | tube plug 16 mm | 2 |
| 17 | BR 000 910 280 | rubber u-moulding 280mm | 1 |
| 18 | MPA 01 040 021 | handlebars - 2008 | 1 |
| 19 | BS 511 000 640 | bolt m6x40 din 931 | 4 |
| 20 | BR 602 006 151 | rubber bumper | 2 |
| 21 | MPA 01 041 220 | anti projection shield major 4s | 1 |
| 22 | BR 900 001 740 | rubber | 1 |



| ELIET MAJOR 4S -- CHASSIS | | | | | |
|---------------------------|----------------|-----|---|------|------------|
| NO | MMA 01 041 120 | REV | 4 | DATE | 2020/02/07 |

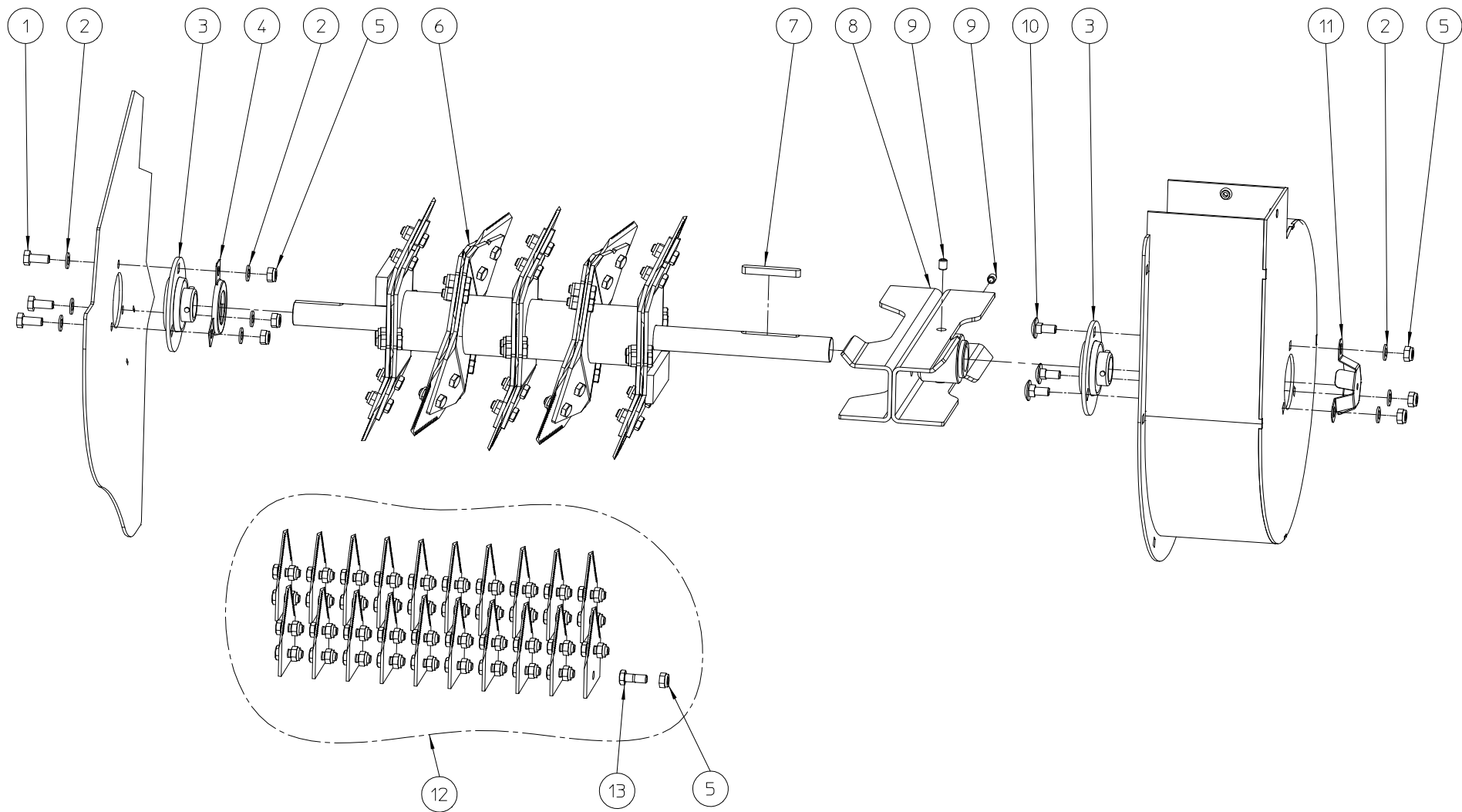
ELIET MANUAL

MAJOR 4S

MMA 01 041 120

CHASSIS

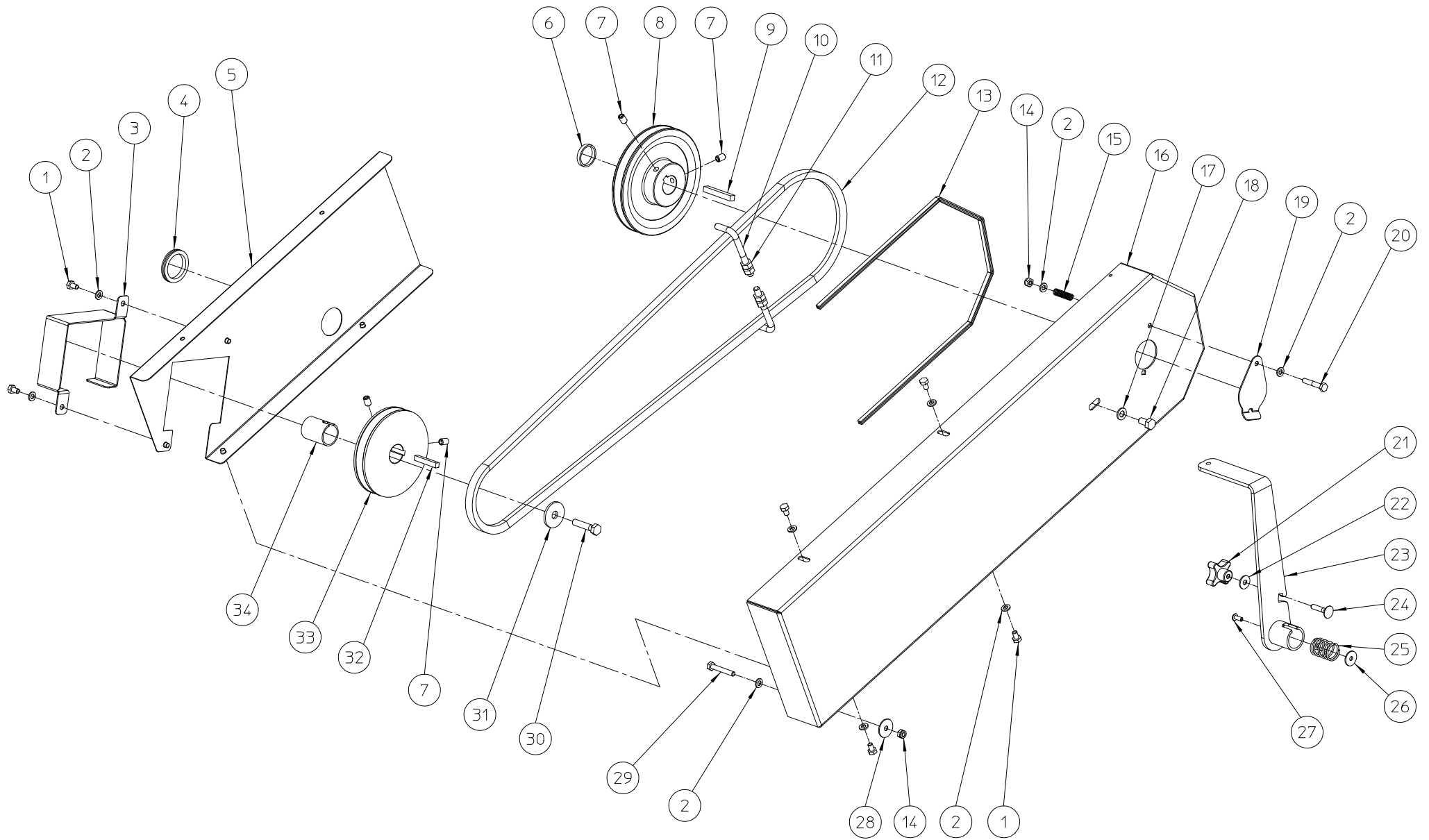
| NUMBER | ARTICLE | DESCRIPTION | QUANTITY |
|--------|----------------|--|----------|
| 1 | MPA 01 041 090 | CLOSING ROTOR MAJOR 4S | 1 |
| 2 | BS 502 000 800 | SELF LOCKING NUT M8 DIN 985 | 8 |
| 3 | BS 531 000 800 | WASHER M8 DIN 125 | 14 |
| 4 | BS 512 000 816 | BOLT M8X16 DIN 933 | 6 |
| 5 | BS 502 001 000 | SELF LOCKING NUT M10 DIN 985 | 6 |
| 6 | BS 531 001 000 | WASHER M10 DIN 125 | 12 |
| 7 | BN 630 510 480 | LOB KNOB Ø60MM - M10X80 | 1 |
| 8 | MPA 01 041 100 | COVER FOR SAFETY SWITCH MI/MA 4S | 1 |
| 9 | BS 512 000 612 | BOLT M6X12 DIN 933 | 1 |
| 10 | MPA 01 041 030 | CHASSIS MAJOR 4S | 1 |
| 11 | BB 221 104 100 | POP PLUG ALU 3.9X10 DIN 7337 A | 10 |
| 12 | MPA 01 041 230 | PROTECTION BLOW CHUTE MAJOR 4S | 1 |
| 13 | MPA 01 041 240 | DIRECTIONAL VALVES BLOW CHUTE MAJOR 4S | 1 |
| 14 | BS 532 008 223 | WASHER M8X22X1.5 | 1 |
| 15 | BN 630 808 400 | LOB KNOB 188-40 M8 | 1 |
| 16 | BS 522 500 816 | SCREW M8X16 ISO 7380 | 2 |
| 17 | BR 112 080 300 | NYLON BUSHING WITH COLLAR (8.2/10.9/18x10) | 2 |
| 18 | BS 554 100 820 | BOLT M8X20 DIN 603 | 6 |
| 19 | BR 111 100 200 | NYLON BUSHING (10.5/21x2.5) | 1 |
| 20 | MPA 01 041 080 | BLOW CHUTE MAJOR 4S | 1 |
| 21 | BS 533 000 800 | LOCK WASHER M8 DIN 127B | 5 |
| 22 | MPA 01 041 040 | TURBINE HOUSING MAJOR 4S | 1 |
| 23 | BS 512 000 610 | BOLT M6X10 DIN 933 | 2 |
| 24 | BS 531 000 600 | WASHER M6 DIN 125 | 3 |
| 25 | MPA 01 010 290 | FRONT PLATE GX270 | 1 |
| 26 | BS 512 001 045 | BOLT M10X65 DIN 933 | 1 |
| 27 | BS 501 001 000 | NUT M10 DIN 934 | 2 |
| 28 | BS 511 001 042 | BOLT M10X50 DIN 931 | 1 |
| 29 | BB 011 000 200 | STARLOCK 20MM | 2 |
| 30 | BW 040 020 000 | WHEEL 4.80-4 | 2 |
| 31 | BM 202 109 000 | HONDA GX 270 | 1 |
| 32 | MPA 01 041 050 | FOOT MAJOR 4S | 1 |
| 33 | BR 900 000 110 | RUBBER SOCKS DIA 90X18MM | 2 |
| 34 | BS 511 001 043 | BOLT M10X55 DIN931 | 4 |
| 35 | MPA 01 041 480 | FIXATION PLATES | 2 |
| 36 | BS 512 001 050 | BOLT M10X100 DIN 933 | 1 |
| 37 | BR 021 150 250 | CAP PVC BLACK 50X25 | 2 |
| 38 | MPA 01 041 250 | WHEEL SHAFT MAJOR 4S | 1 |
| 39 | BS 531 002 000 | WASHER M20 DIN 125 | 2 |



ELIET MAJOR 4S -- ROTOR

| | | | | | |
|----|----------------|-----|---|------|------------|
| NO | MMA 01 041 130 | REV | 1 | DATE | 2016/03/08 |
|----|----------------|-----|---|------|------------|

| # | Order nr | article description | quantity |
|----|----------------|--|----------|
| 1 | BS 512 000 820 | bolt m8x20 din 933 | 3 |
| 2 | BS 531 000 800 | washer m8 din 125 | 9 |
| 3 | BL 801 502 500 | bearing + flanges aspf 205 | 2 |
| 4 | MPA 01 041 270 | bearing protection cover pf205 | 1 |
| 5 | BS 502 000 800 | self locking nut m8 din 985 | 6 |
| 6 | MPA 01 041 060 | rotor major 4s | 1 |
| 7 | BB 351 080 760 | key 8x7x60 din 6885a | 1 |
| 8 | MPA 01 041 070 | propeller major 4s | 1 |
| 9 | BS 023 000 810 | set screw m8x10 din 916 | 2 |
| 10 | BS 554 100 820 | bolt m8x20 din 603 | 3 |
| 11 | MPA 01 041 260 | bearing protection cover pf205 + shaft | 1 |
| 12 | BU 401 200 302 | set of knives (20) | 1 |
| 13 | BS 011 000 822 | bolt m8x22 din 931 | 0 |



ELIET MAJOR 4S --- TRANSMISSION

| | | | | | |
|----|----------------|-----|---|------|------------|
| NO | MMA 01 041 140 | REV | 3 | DATE | 2020/02/10 |
|----|----------------|-----|---|------|------------|

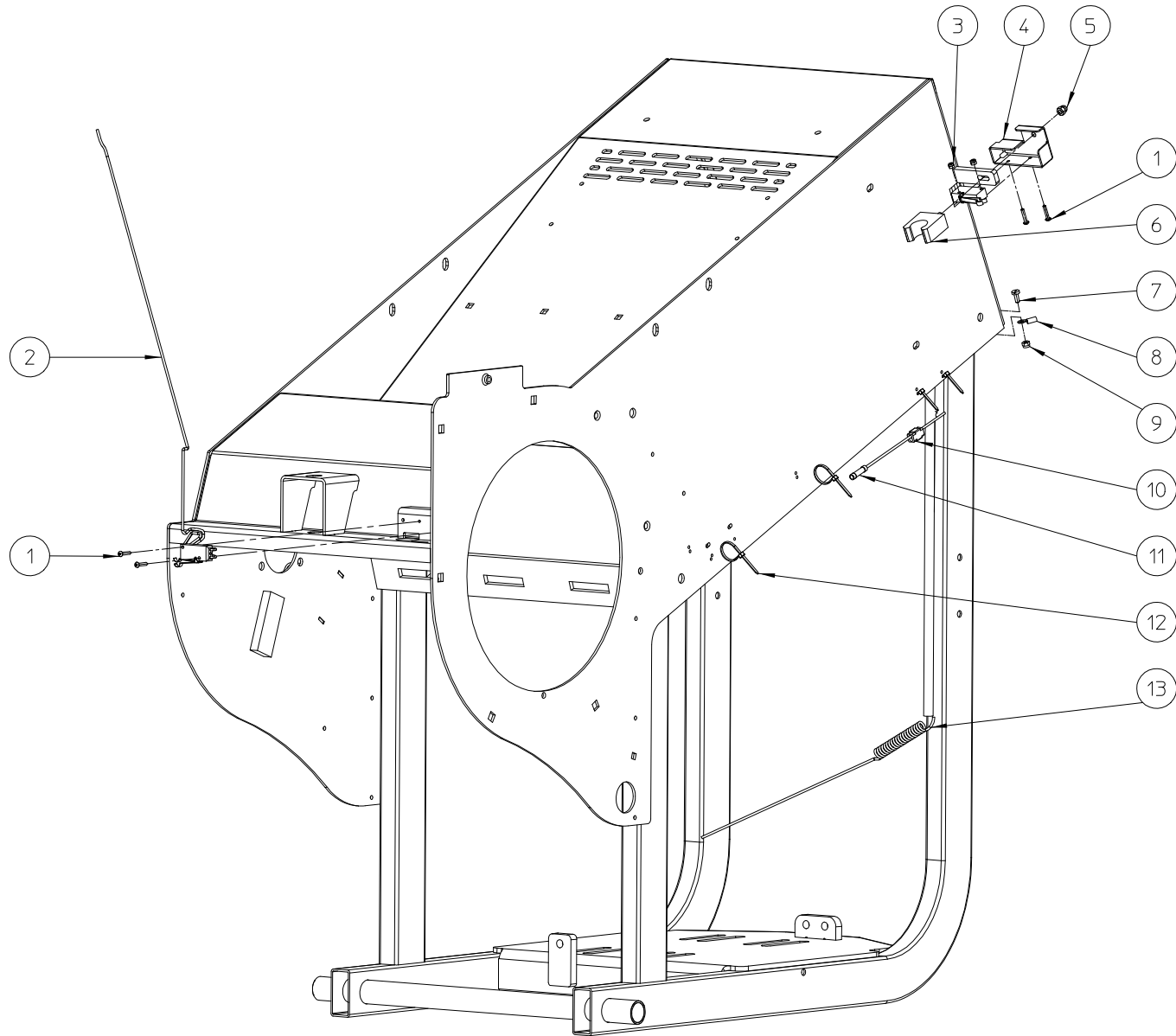
ELIET MANUAL

MAJOR 4S

MMA 01 041 140

TRANSMISSION

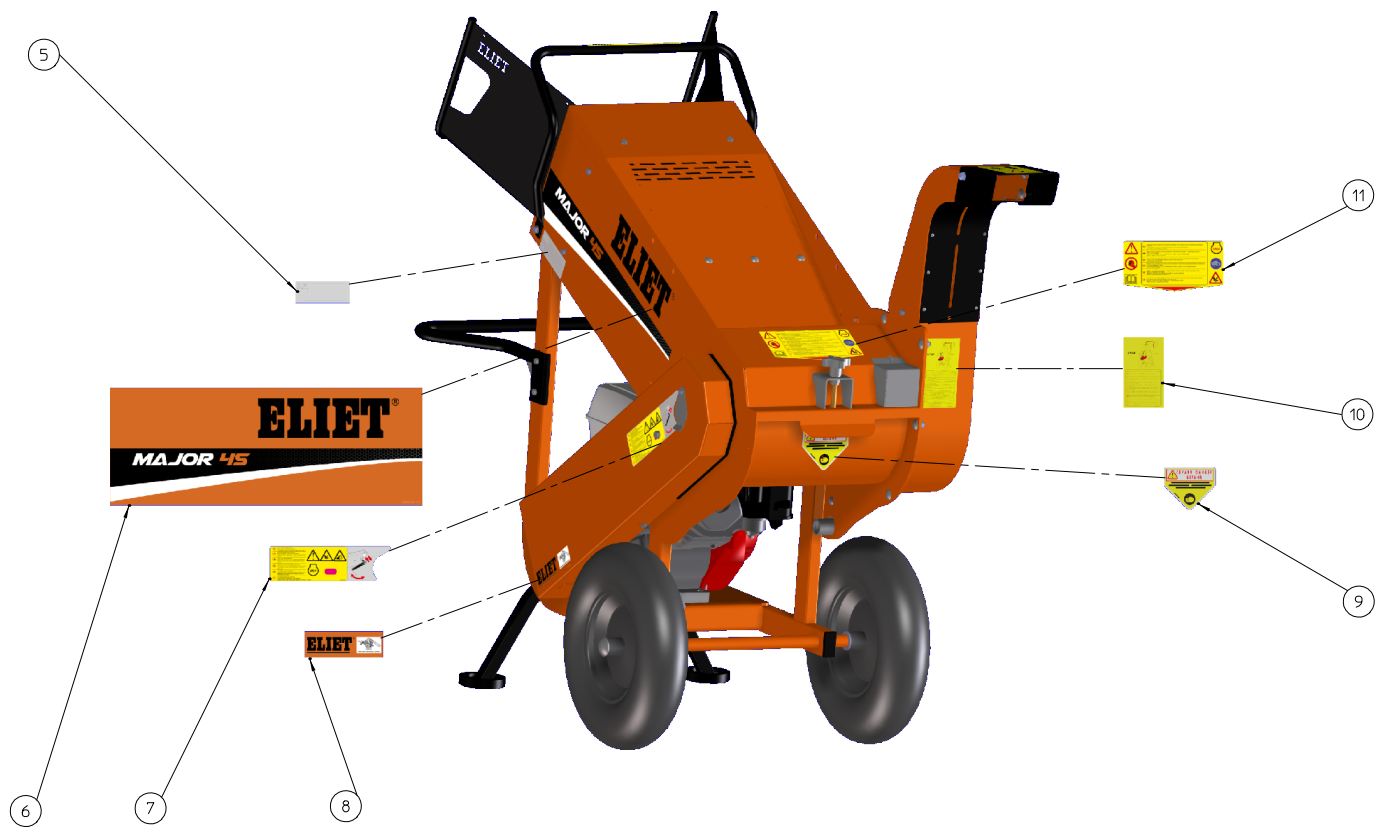
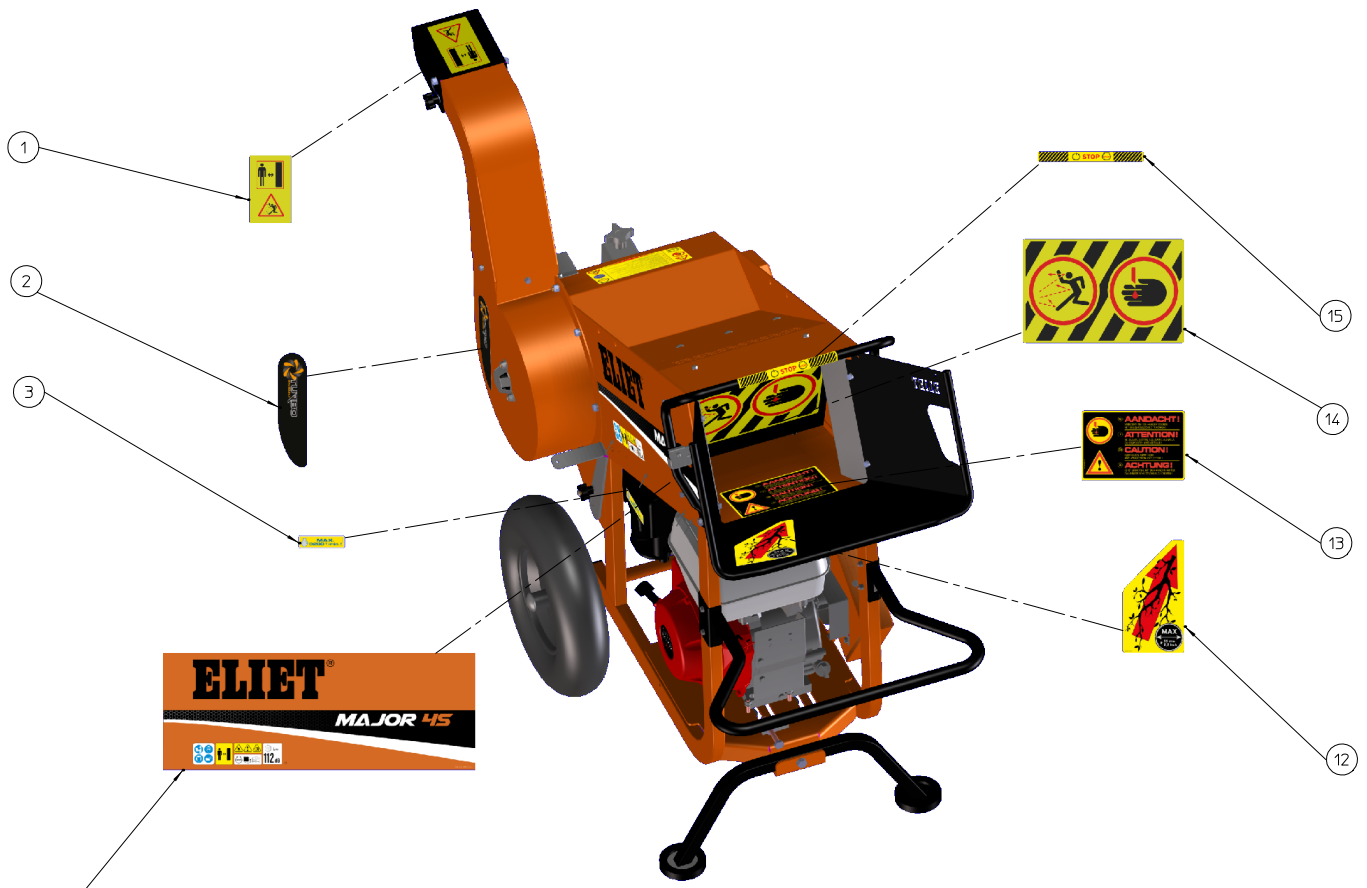
| NUMBER | ARTICLE | DESCRIPTION | QUANTITY |
|--------|----------------|---|----------|
| 1 | BS 512 000 610 | BOLT M6X10 DIN 933 | 6 |
| 2 | BS 531 000 600 | WASHER M6 DIN 125 | 9 |
| 3 | MPA 01 010 170 | PROTECTION ENGINE SHAFT | 1 |
| 4 | BR 500 103 800 | RUBBER PLUG 42X38X1.6 | 1 |
| 5 | MPA 01 030 120 | TRANSMISSION GUARD (INSIDE) | 1 |
| 6 | MPA 01 041 710 | POSITIONING WASHER | 1 |
| 7 | BS 023 000 812 | SET SCREW M8X12 DIN 916 | 4 |
| 8 | BA 565 714 001 | PULLEY SPA 140X25X8 | 1 |
| 9 | BB 341 080 750 | KEY 8X7X50 DIN 6880 | 1 |
| 10 | MPA 01 010 180 | BELT CATCHER | 2 |
| 11 | BS 501 000 800 | NUT M8 DIN 934 | 4 |
| 12 | BA 521 216 000 | BELT XPA 1600 | 1 |
| 13 | BR 000 910 600 | RUBBER U-MOULDING 600MM | 1 |
| 14 | BS 502 000 600 | SELF LOCKING NUT M6 DIN 985 | 2 |
| 15 | BV 904 000 010 | COMPRESSION SPRING Ø8.5X30MM FIL Ø1MM | 1 |
| 16 | MPA 01 041 120 | TRANSMISSION GUARD MI/MA 4S | 1 |
| 17 | BS 531 000 800 | WASHER M8 DIN 125 | 1 |
| 18 | BS 512 000 816 | BOLT M8X16 DIN 933 | 1 |
| 19 | MPA 01 041 210 | FLAP MI/MA 4S | 1 |
| 20 | BS 511 000 635 | BOLT M6X35 DIN 931 | 1 |
| 21 | BN 630 206 000 | LOB KNOB 188-40 M6 | 1 |
| 22 | BS 532 006 183 | WASHER M6X18X1.5 | 1 |
| 23 | MPA 01 041 140 | LEVER TO UNBLOCK MI/MA 4S | 1 |
| 24 | BS 554 100 630 | BOLT M6X30 DIN 603 | 1 |
| 25 | BV 904 000 020 | COMPRESSION SPRING LEVER H.32 Dia E.24 GALVAN | 1 |
| 26 | BS 532 005 202 | WASHER M5X20X1.5 | 1 |
| 27 | BB 221 005 120 | POP PLUG STEEL 4.8X12 DIN 7337 A | 1 |
| 28 | BS 532 006 253 | WASHER M6X25X1.5 | 1 |
| 29 | BS 512 000 640 | BOLT M6X40 DIN 933 | 1 |
| 30 | BS 511 040 840 | BOLT UNF 5/16"X1"1/2 | 1 |
| 31 | BS 532 010 356 | WASHER M10X35X3 | 1 |
| 32 | BB 342 060 640 | KEY 6.35X6.35X40 DIN 6880 | 1 |
| 33 | BA 565 711 201 | PULLEY SPA 112 (ENGINE) | 1 |
| 34 | MPA 01 041 700 | POSITIONING PART ENGINE PULLEY | 1 |



ELIET MAJOR 4S -- ELECTRICAL SYSTEM

| | | | | | |
|----|----------------|-----|---|------|------------|
| NO | MMA 01 041 150 | REV | 1 | DATE | 2014/01/24 |
|----|----------------|-----|---|------|------------|

| # | Order nr | article description | quantity |
|----|----------------|-----------------------------|----------|
| 1 | BS 522 500 316 | screw m3x16 iso 7380 | 4 |
| 2 | BE 120 010 500 | safety switch | 2 |
| 3 | BS 502 000 300 | self locking nut m3 din 985 | 2 |
| 4 | MPA 01 010 200 | cover for safety switch | 1 |
| 5 | BS 505 500 500 | nut m5 din 1587 | 1 |
| 6 | BT 654 001 901 | clam 19mm | 1 |
| 7 | BS 541 000 410 | screw m4x10 din 84 | 1 |
| 8 | BE 031 013 000 | eyed terminal m6 | 1 |
| 9 | BS 502 000 400 | self locking nut m4 din 985 | 1 |
| 10 | BE 031 034 201 | blue wire connector 2.5mm | 1 |
| 11 | BE 031 013 400 | cable connexion red | 1 |
| 12 | BE 043 010 100 | wrap tie 100x2.5 | 4 |
| 13 | BE 090 231 141 | red wire 1.5 ce 114 | 1 |



| MAJOR 4S -- STICKERS ELIET | | | | | | | |
|----------------------------|----------------|-----|---|------|------------|--|--|
| NO | MMA 01 041 210 | REV | 1 | DATE | 2015/11/04 | | |

| # | Order nr | article description | quantity |
|----|----------------|---|----------|
| 1 | BQ 505 014 100 | safety sticker eject | 1 |
| 2 | BQ 501 010 110 | sticker turbo discharge 220x57 | 1 |
| 3 | BQ 505 010 030 | sticker max 3200 rpm 90x25 | 1 |
| 4 | BQ 501 040 030 | sticker eliet major 4s (l) | 1 |
| 5 | BQ 505 010 010 | identity sticker ce 120x30 | 1 |
| 6 | BQ 501 040 040 | sticker eliet major 4s (r) | 1 |
| 7 | BQ 505 010 430 | safety sticker protection cover 231 x 65 | 1 |
| 8 | BQ 501 010 120 | sticker eliet patented shredding system | 1 |
| 9 | BQ 505 010 070 | safety sticker 100x80 (hand cuts) | 1 |
| 10 | BQ 505 010 391 | safety stop sticker 135x75mm | 1 |
| 11 | BQ 505 010 420 | sticker check blade bolts 200 x 86 | 1 |
| 12 | BQ 501 040 050 | sticker direction input major | 1 |
| 13 | BQ 505 010 110 | safety sticker 190x125 (in feed) | 1 |
| 14 | BQ 505 010 090 | safety sticker 310x200 | 1 |
| 15 | BQ 505 010 440 | sticker safety bracket minor 4s / major 4s 200 x 25 | 1 |